

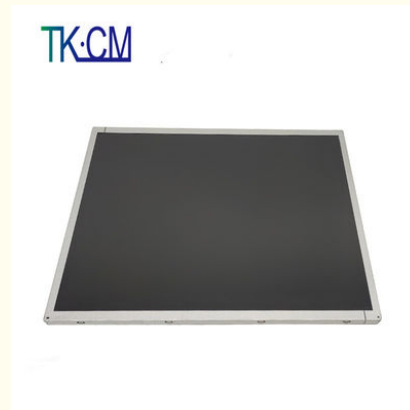
Customized Touch Monitor IP65 Waterproof 21.5 Inch Outdoor High Brightness LCD Screen

Our Product Introduction

for more products please visit us on monitorspcs.com

Basic Information

- Place of Origin: Shen Zhen
- Brand Name: Skipsoul
- Certification: CE/ FCC/UL/ ROHS
- Model Number: G215
- Payment Terms: T/T, Western Union, MoneyGram, PayPal

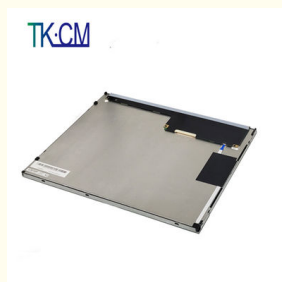


Product Specification

- Product Name: 21.5 Inch Touch Monitor
- Size: 21.5 Inch Touch Monitor
- Color: Silver/Custom
- Resolution: 1920*1080p
- Screen Proportion: 16 9
- Brightness: 1000cd/m2
- Viewing Angle: H:178°V:178°
- Signal Interface: LVDS
- Backlight: Led Backlight
- Highlight: Outdoor High Brightness LCD Screen, 21.5in High Brightness LCD Screen, IP65 high brightness lcd display



More Images



Product Description

Customized Touch Monitor IP65 Waterproof 21.5 Inch Outdoor High Brightness LCD Screen

Introducing our 21.5-inch Outdoor High Brightness Touch Monitor, a cutting-edge solution that combines exceptional visibility, rugged construction, and interactive touch functionality. Designed for outdoor environments, this state-of-the-art touch monitor offers a superior user experience and versatility in various applications.

With its generous 21.5-inch touch-enabled screen, this monitor provides ample space for interactive content and intuitive user interactions. The high brightness feature ensures excellent visibility, even in direct sunlight or challenging lighting conditions, making it ideal for outdoor kiosks, wayfinding systems, interactive digital signage, and more.

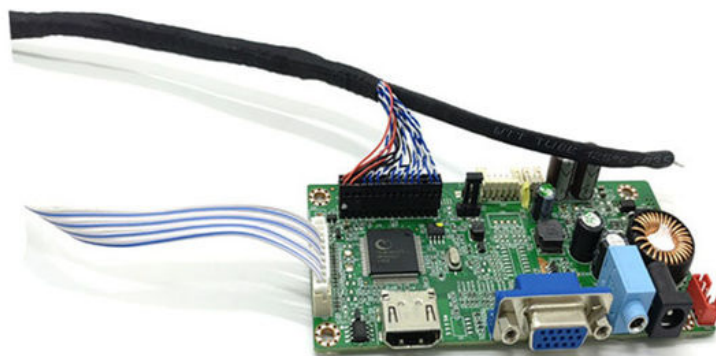
Featuring advanced touch technology, this monitor enables seamless and responsive touch interactions, allowing users to navigate content, zoom, swipe, and interact with ease. Whether it's for interactive maps, product catalogs, or self-service applications, the 21.5-inch Outdoor High Brightness Touch Monitor delivers an engaging and intuitive user experience.

Built with durability in mind, this touch monitor is weatherproof and designed to withstand harsh outdoor conditions. Its robust construction protects against dust, moisture, and vandalism, ensuring reliable performance in demanding environments.

The 21.5-inch Outdoor High Brightness Touch Monitor offers versatile connectivity options, making it easy to integrate with various hardware and software systems. It supports multiple touch protocols and can be seamlessly integrated into existing setups, providing flexibility and compatibility for your specific requirements.

In addition to its exceptional performance, this touch monitor incorporates energy-saving technologies, optimizing power consumption while maintaining high-performance levels. This eco-friendly design promotes sustainability and reduces operating costs over time.

Parameters	
Brand	OEM
Product color	
Backlight source	LCD
Screen size	21.5 inch
Screen proportion	16:9
Backlight	LCD
Resolution	1920*1080
Brightness	1000cd/m2
Contrat	1000:1
Viewing angle	H:178°V:178°
Color temperature	16.7M
Brushing	60Hz
Scanning method	Progressive scan
Response Time	3ms
Other interfaces	LVDS
Power	
Environmental conditions	Work temperature : -10 to 70°C
	Working humidity : -10 to 70°C
	Save temperature : -10 to 70°C
	Save humidity : -10 to 70°C
Power	110V-240V -DC12V
	electricity : 5A
	Machine power consumption : 60W



FAQ

Q:How can I get the price?

A:We usually give you a quotation within 24 hours after receiving the inquiry (except weekends and holidays), if you need a quotation urgently, you can contact us by mail or other means.

Q:What is the minimum order?

A:Our company mainly deals in wholesale business,but if you insist on buying one, or you only need one set,we will also deliver the goods to you.

Q:Can I buy a prototype to test before buying in bulk?

A:Yes, please feel free to contact us.

Q:What payment methods do you accept?

A:Our company supports most payment methods, but usually accepts T/T, PayPal.

Q:What are your shipping methods?

A:We support sea, air, rail transportation and express delivery, and also support customers to use their own logistics forwarders. Please confirm with us before placing an order.

Q:I would like to ask you if it's possible to have my logo on the product.

A:Yes, we support OEM and special customization, so we can design, produce and process according to customer's requirements. Of course, custom logos on the box and instruction manual are also included.

Q:What is your delivery time?

A:It depends on your order quantity and order season. Usually small quantities will be shipped within 5 to 15 days, and large quantities will be delivered within about 30 days. All in all, the delivery time will not exceed the time agreed between us and the buyer.

 **Touch Vision (Shenzhen Sufeida) Technology Co., Ltd.**



+86 18566758749



cnsfdlhx@monitortp.com



monitorspcs.com

605, Workshop C, No.1, East Industrial District, Shangxue Science park, Xinxue Community, Bantian Street,
Longgang District, Shenzhen, China