



AUO Brand LCD Module 15 Inch TFT LCD Screen G150XVN01.0 With LVDS 30bins Signal Port Original Screen For Monitors

Our Product Introduction

for more products please visit us on monitorspcs.com

Basic Information

- Place of Origin: Shen Zhen
- Brand Name: AUO
- Certification: CE/ FCC/UL/ ROHS
- Model Number: G150XVN01.1
- Payment Terms: T/T, Western Union, MoneyGram, PayPal

TKCM



Product Specification

- Product Name: LCD Display Panel
- Resolution: 1024*768
- Interface: LVDS
- Viewing Angle: 89/89/89/89 (Typ.)(CR 10)
- Brightness: 300 Nit
- Application: LED Monitors, Digital Signage, Digital Photo Frames, All In One, Etc
- Touch Panel: Optional Touch Panel
- Model P/N: G150XVN01.0
- Keyword: LCD Tft Module
- Highlight: **High Brightness Outdoor LCD Monitor,
15in Outdoor LCD Monitor,
Industrial lcd outdoor screen**

TKCM



More Images

TKCM



Product Description

AUO Brand LCD Module 15 Inch TFT LCD Screen G150XVN01.0 With LVD 30bins Signal Port Original Screen For Monitors

15 Inch High Brightness LCD Monitor

Among these innovations is the 15-inch high-brightness LCD monitor, a compact yet powerful device that brings outdoor advertising to new heights.

Brightness And Color

The standout feature of the 15-inch high-brightness outdoor LCD monitor is its exceptional brightness. With its high luminance levels, this display ensures that advertisements remain vivid and eye-catching, even in direct sunlight.

Durability for Outdoor Conditions

Outdoor environments pose unique challenges for electronic devices, including exposure to harsh weather conditions and potential vandalism. The 15-inch high-brightness outdoor LCD monitor is built to withstand these challenges.

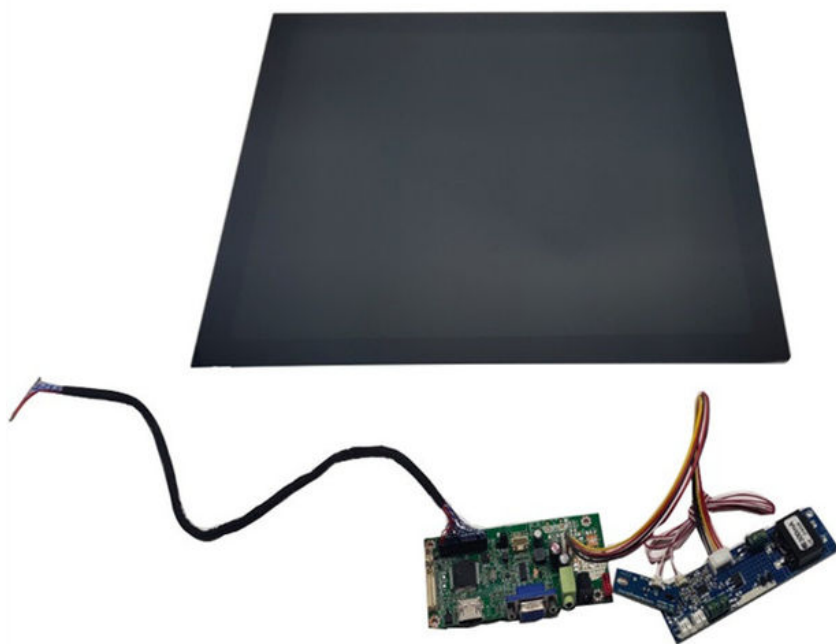
Flexible Content Management

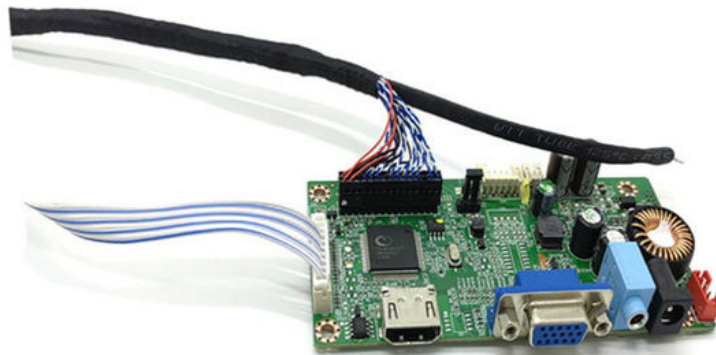
The 15-inch high-brightness outdoor LCD monitor offers flexibility in content management. The display supports various media formats, including static images, videos, and interactive content.

Conclusion

The 15-inch high-brightness outdoor LCD monitor is a powerful tool that empowers advertisers to create impactful outdoor advertising campaigns. With its versatility and adaptability, the 15-inch high-brightness outdoor LCD monitor opens up new possibilities for engaging and memorable outdoor advertising experiences.

15 Inch High Brightness Outdoor LCD Monitor	
Brand	Customized
Product Color	
Backlight source	AU15
Screen size	15 inch
Screen proportion	(5:4)
Backlight	LED
Resolution	1024*768
Brightness	1000cd/m2
Contract	700:1
Viewing angle	H:178°V:178°
Color temperature	16.7M
Brushing	60Hz
Scanning method	Progressive scan
Response Time	3ms
Other interfaces	VGA/HDMI/DC12V
Power	
Environmental conditions	Work temperature: -10 to 70°C
	Working humidity: -10 to 70°C
	Save temperature: -10 to 70°C
	Save humidity: -10 to 70°C
Power	110V-240V -DC12V
	electricity:4A
	Machine power consumption: 40W





FAQ

Q: How can I get the price?

A: We usually give you a quotation within 24 hours after receiving the inquiry (except weekends and holidays), if you need a quotation urgently, you can contact us by mail or other means.

Q: What is the minimum order?

A: Our company mainly deals in wholesale business, but if you insist on buying one, or you only need one set, we will also deliver the goods to you.

Q: Can I buy a prototype to test before buying in bulk?

A: Yes, please feel free to contact us.

Q: What payment methods do you accept?

A: Our company supports most payment methods, but usually accepts T/T, PayPal.

Q: What are your shipping methods?


A: We support sea, air, rail transportation, and express delivery, and also support customers to use their own logistics forwarders. Please confirm with us before placing an order.

Q: I would like to ask you if it's possible to have my logo on the product.

A: Yes, we support OEM and special customization, so we can design, produce, and process according to customer's requirements. Of course, custom logos on the box and instruction manual are also included.

Q: What is your delivery time?

A: It depends on your order quantity and order season. Usually, small quantities will be shipped within 5 to 15 days, and large quantities will be delivered within about 30 days. All in all, the delivery time will not exceed the time agreed between us and the buyer.

 **Touch Vision (Shenzhen Sufeida) Technology Co., Ltd.**



+86 18566758749



cnsfdlhx@monitortp.com



monitorspcs.com

605, Workshop C, No.1, East Industrial District, Shangxue Science park, Xinxue Community, Bantian Street,
Longgang District, Shenzhen, China