

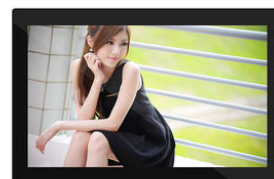
IPS 21.5 Inch Healthcare Digital Signage All In One Wall Mount Touch Screen

Our Product Introduction

for more products please visit us on monitorspcs.com

Basic Information

- Place of Origin: Shen Zhen
- Brand Name: Skipsoul
- Certification: CE/ FCC/UL/ ROHS
- Model Number: A2201



Product Specification

- CPU: Ruixin RK3399
- Operating System: Android 10.1
- Touch Screen: Touch
- Bluetooth: Support
- Speaker: 2*3W
- Interface: HDMI/USB/SD/Type-C
- Highlight: 21.5in Healthcare Digital Signage, Healthcare Digital Signage Wall Mount, IPS healthcare digital signages



More Images



IPS 21.5 Inch Healthcare Digital Signage All In One Wall Mount Touch Screen

21.5 Inch Medical Digital Signage All-in-One Wall-Mounted Touch Screen

In the ever-evolving field of healthcare, effective communication plays a vital role in providing quality patient care and enhancing operational efficiency. The 21.5-Inch Medical Digital Signage All-in-One Wall-Mounted Touch Screen is revolutionizing healthcare communication by offering a comprehensive and interactive solution. In this article, we will explore the features and benefits of the 21.5-Inch Medical Digital Signage All-in-One Wall-Mounted Touch Screen, highlighting its interactive capabilities, content management flexibility, and impact on healthcare communication.

Interactive Touch-Enabled Interface

The 21.5-Inch Medical Digital Signage All-in-One Wall-Mounted Touch Screen incorporates an interactive touch-enabled interface, transforming traditional signage into a dynamic communication tool. Patients can engage with the display by interacting directly with the screen, accessing information, navigating directories, and even filling out forms digitally. The intuitive touch functionality enhances patient experience, empowering them to actively participate in their healthcare journey.

Enhanced Efficiency with Wall-Mounted Design

The wall-mounted design of the 21.5-Inch Medical Digital Signage optimizes space utilization within healthcare facilities. By mounting the display on walls, it becomes easily visible and accessible in high-traffic areas such as waiting rooms, reception areas, and hallways. This placement ensures that important information is readily available to patients, visitors, and staff members.

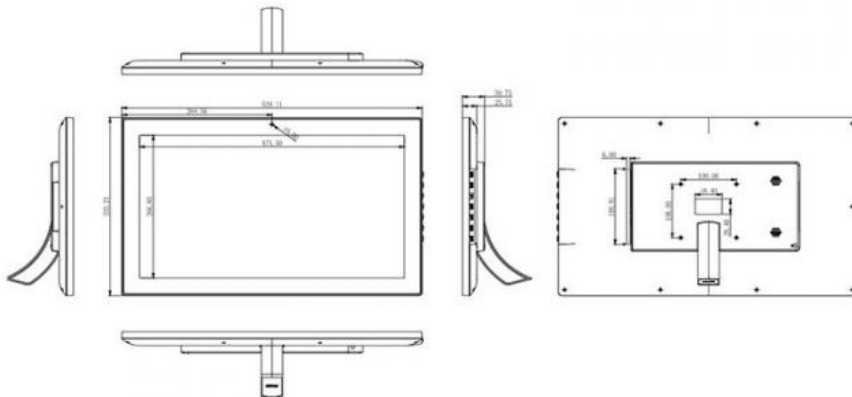
Conclusion

The 21.5-Inch Medical Digital Signage All-in-One Wall-Mounted Touch Screen is transforming healthcare communication by providing an interactive and dynamic solution for healthcare facilities. Its touch-enabled interface, versatile content management, wall-mounted design, and compliance measures contribute to enhanced patient experience, streamlined communication, and improved operational efficiency. Embrace the power of the 21.5-Inch Medical Digital Signage All-in-One Wall-Mounted Touch Screen to revolutionize healthcare communication and elevate the standard of care in your facility.

IPS 21.5 Inch Healthcare Digital Signage All In One Wall Mount Touch Screen		
System	CPU	Ruixin RK3399
	RAM	4G
	Memory	64G
	Operating system	Android 10.1
Capacitance touch	Touch screen	capacitive touch
	Glass material	TP
	Transmittance	≥90%
	Touch number	>50 million times
	Touch induction	20g current sensing
Display	LED Screen	LED
	Resolution	1920*1080
	Contrast	1000:1
	Brightness	250cdm2
	Visual angle	(H)178/178(V)
	Screen proportion	16:9
The internet	WiFi	802.11b/g/n
	Ethernet	10M/100M Network port
	BT	Support
	3G	4G USB
Interface	SD	SD Card ,(Support maximum 32GB)
	Mini USB	USB
	USB Hostx3	USB Host 2.0
	Power socket	DC Enter
	RJ-45	Ethernet *1
	Earphone	3.5mm Stereo headphone output
	HD-MI Interface output	YES
	TF	YES
Media play	Video format	MPEG-1,MPEG-2,MPEG-4,H.263,H.264,VC1,RV etc.,support up to 1080p
	Audio format	MP3/WMA/AAC etc.
	Picture format	jpeg
other	Speaker	2*3W
	Camera	Optional
	wall hanging	100x100 mm
	OSD Language	Languages: Chinese, English, Japanese, German, French, Italian, Spanish, Korean, etc.
	Software support	QQ / Map / Game / Email / Electronics Market and other applications
	Operating Instruction	Standard
	Adapter	Power Adapter POE

Attachment	Certification	CE/FCC/ROHS
		21.5 Inch Android Touch Screen Advertising Player





FAQ

Q:How can I get the price?

A:We usually give you a quotation within 24 hours after receiving the inquiry (except weekends and holidays), if you need a quotation urgently, you can contact us by mail or other means.

Q:What is the minimum order?

A:Our company mainly deals in wholesale business, but if you insist on buying one, or you only need one set, we will also deliver the goods to you.

Q:Can I buy a prototype to test before buying in bulk?

A:Yes, please feel free to contact us.

Q:What payment methods do you accept?

A:Our company supports most payment methods, but usually accepts T/T, PayPal.

Q:What are your shipping methods?

A:We support sea, air, rail transportation and express delivery, and also support customers to use their own logistics forwarders. Please confirm with us before placing an order.

Q:I would like to ask you if it's possible to have my logo on the product.

A:Yes, we support OEM and special customization, so we can design, produce and process according to customer's requirements. Of course, custom logos on the box and instruction manual are also included.

Q:What is your delivery time?

A:It depends on your order quantity and order season. Usually small quantities will be shipped within 5 to 15 days, and large quantities will be delivered within about 30 days. All in all, the delivery time will not exceed the time agreed between us and the buyer.

ETKCM Touch Vision (Shenzhen Sufeida) Technology Co., Ltd.



+86 19925413433



cnsfdxhl@monitortp.com



monitorspcs.com

605, Workshop C, No.1, East Industrial District, Shangxue Science park, Xinxue Community, Bantian Street,
Longgang District, Shenzhen, China