

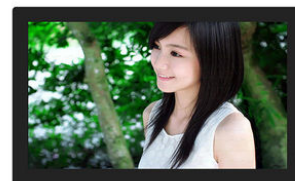


Android Digital Signage Indoor Wall Mounted Portable Moveable Ultra Thin Wifi LCD Display Poster Advertising Players

Our Product Introduction

Basic Information

- Place of Origin: Shen Zhen
- Brand Name: Skipsoul
- Certification: CE/ FCC/UL/ ROHS
- Model Number: A2705
- Payment Terms: T/T, Western Union, MoneyGram, PayPal



Product Specification

- Name: Android Tablet Digital Signage
- CPU: RK3399
- Operating System: Android 11
- Touch Screen: 10 Point Capacitive Touch
- Bluetooth: Support
- Speaker: 2*4W
- Display Ratio: 16:9
- Display Type: LED
- Interface: HDMI/USB/SD/RJ45/R232/Type-C
- Highlight: **Black Floor Standing Digital Signage, Floor Standing Digital Signage RK3399, RJ45 Android Tablet Digital Signage**



for more products please visit us on monitorspcs.com

Product Description

Android Digital Signage Indoor Wall Mounted Portable Moveable Ultra Thin Wifi LCD Display Poster Advertising Players

Black Android Tablet Digital Signage for Banks and Supermarkets

In today's fast-paced world, banks and supermarkets are constantly seeking innovative ways to engage and communicate with their customers. One powerful solution that has gained significant traction is the use of black Android digital signage. In this article, we will explore the benefits and applications of black Android tablet digital signage in the banking and supermarket sectors.

Captivating Visuals and Information Display

Black Android digital signage offers banks and supermarkets an effective medium to display captivating visuals and key information. The high-resolution screens and vibrant colors of these tablets ensure that advertisements, promotional offers, and product information are visually appealing and engaging. Whether it's displaying interest rates, new product launches, or special discounts, the vivid display of information on black Android tablets grabs customers' attention and encourages them to explore further.

Interactive and Engaging Customer Experiences

Interactivity is key to capturing the attention of modern customers. Android digital signage allows banks and supermarkets to create interactive and engaging experiences for their customers. With touchscreens, customers can navigate through menus, access additional information about products or services, or even complete transactions directly on the tablet.

Real-time Updates and Targeted Messaging

One of the significant advantages of black Android digital signage is the ability to deliver real-time updates and targeted messaging. With the flexibility of cloud-based content management systems, banks and supermarkets can remotely update and schedule content across multiple tablets simultaneously, ensuring that the information displayed remains relevant and up to date.

Conclusion

Black Android digital signage is transforming the way banks and supermarkets engage with their customers. By leveraging the power of black Android digital signage, banks and supermarkets can enhance customer satisfaction, streamline operations, and effectively communicate their brand message. As technology continues to advance, these devices will continue to evolve and play a vital role in shaping the future of customer engagement in the banking and supermarket sectors.

Black Android Tablet Digital Signage RK3399 RJ45 Port For Bank Supermarket		
System	CPU	RK3399
	RAM	4 GB
	Memory	64 GB
	Operating system	Android 11
Capacitance touch	Touch screen	10-point capacitive touch
	Glass material	G+G
	Transmittance	≥90%
	Touch number	>50 million times
	Touch induction	20g current sensing
Display	LED Screen	LED
	Resolution	1920*1080
	Contract	1200:1
	Brightness	300cdm2
	Visual angle	(H)178/178(V)
	Screen proportion	16:9
The Internet	WiFi	802.11b/g/n
	Ethernet	10M/100M Network port
	BT	Support
	4G	NO
Interface	SD	SD Card
	Mini USB	USB
	USB	USB 2.0 *2
	Power socket	DC
	RJ-45	Ethernet *1
	Earphone	3.5mm Stereo headphone output
	HD-MI Interface output	YES
	TF	YES
Media play	Video format	MPEG-1,MPEG-2,MPEG-4,H.263,H.264,VC1,RV etc.,support
	Audio format	MP3/WMA/AAC
	Picture format	jpeg
other	Speaker	2*4W
	Camera	300W
	wall hanging	75x75 mm
	OSD Language	Languages: Chinese, English, Japanese, German, French, Italian, Spanish, Korean, etc.
	Software support	QQ / Map / Game / Email / Electronics Market and other
	Operating Instruction	Standard

Attachment	Adapter	Power Adapter
	Certification	CE/FCC/ROHS
	Size	27-inch Android Digital Signage

FAQ

Q: How can I get the price?

A: We usually give you a quotation within 24 hours after receiving the inquiry (except weekends and holidays), if you need a quotation urgently, you can contact us by mail or other means.

Q: What is the minimum order?

A: Our company mainly deals in wholesale business, but if you insist on buying one, or you only need one set, we will also deliver the goods to you.

Q: Can I buy a prototype to test before buying in bulk?

A: Yes, please feel free to contact us.

Q: What payment methods do you accept?

A: Our company supports most payment methods, but usually accepts T/T, PayPal.

Q: What are your shipping methods?

A: We support sea, air, rail transportation, and express delivery, and also help customers to use their own logistics forwarders. Please confirm with us before placing an order.

Q: I would like to ask you if it's possible to have my logo on the product.

A: Yes, we support OEM and special customization, so we can design, produce, and process according to customer's requirements. Of course, custom logos on the box and instruction manual are also included.

Q: What is your delivery time?

A: It depends on your order quantity and order season. Usually, small quantities will be shipped within 5 to 15 days, and large quantities will be delivered within about 30 days. All in all, the delivery time will not exceed the time agreed between us and the buyer.



Touch Vision (Shenzhen Sufeida) Technology Co., Ltd.



+86 18566758749



cnsfdlhx@monitortp.com



monitorspcs.com

605, Workshop C, No.1, East Industrial District, Shangxue Science park, Xinxue Community, Bantian Street,
Longgang District, Shenzhen, China